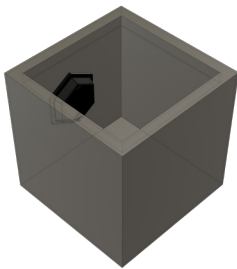


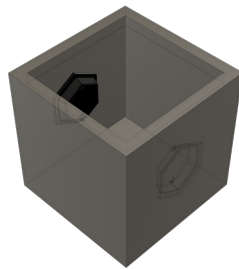
## Botanic 50

For an elegant, surprising and very sonorous musical experience - indoors and outdoors.  
 A unique loudspeaker. Easy to use and connect. For indoor use, e.g. in the living room or entrance area, and outdoor use, e.g. on the terrace or by the pool. Thanks to powerful Invisible Speakers from Revox, the side surfaces of the highquality and very decorative plant pot are used for impressive sound reproduction.  
 Thanks to the protected installation inside, the Botanic is weatherproof and can also be used flexibly outdoors.

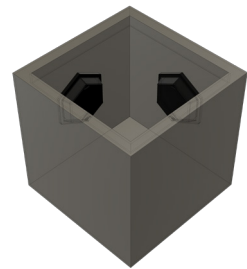
## OVERVIEW VARIANTS



**Botanic 50-1**  
 Plant pot (50x50x50cm) with an Invisible Speaker on one side.



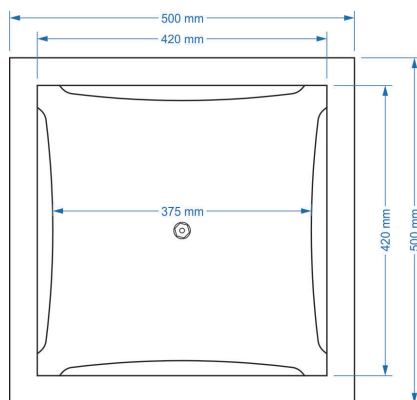
**Botanic 50-2o**  
 Plant pot (50x50x50cm) with two Invisible Speakers opposite each other.



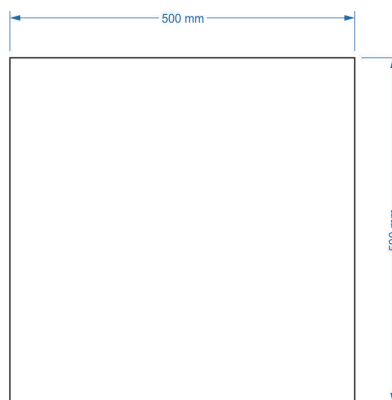
**Botanic 50-2c**  
 Plant pot (50x50x50cm) with two Invisible Speakers across the corner.

## TECHNICAL DATA

	Botanic 50-1	Botanic 50-2o	Botanic 50-2c
Order no.	108465501	108465502	108465512
Dimensions W x D x H (cm)	50 x 50 x 50	50 x 50 x 50	50 x 50 x 50
Material	Fiberglass, UV and frost resistant	Fiberglass, UV and frost resistant	Fiberglass, UV and frost resistant
Color	anthracite	anthracite	anthracite
Number of Invisible Speakers	1	2	2
Arrangement of Invisible Speakers	one side	opposite sides	sides across corner
Impedance	1 x 8 Ohm	2 x 8 Ohm	2 x 8 Ohm
Performance	1 x 60 Watt	2 x 60 Watt	2 x 60 Watt



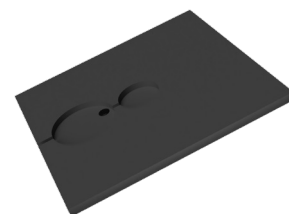
Botanic 50  
 Interior view incl. dimensions



Botanic 50  
 Exterior view incl. dimensions

## ACCESSORIES

	Botanic Floor Plate 50
Dimensions (cm)	47 x 47 x 18
Order no.	108465520



Base plate made of water-resistant and lacquered wood for indoor and protected outdoor use.