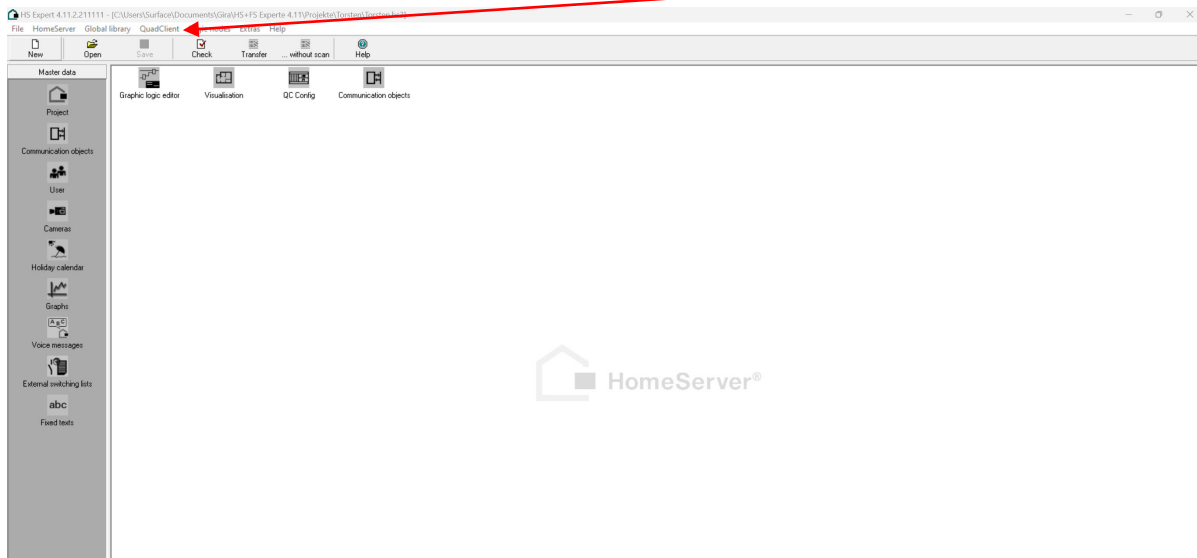
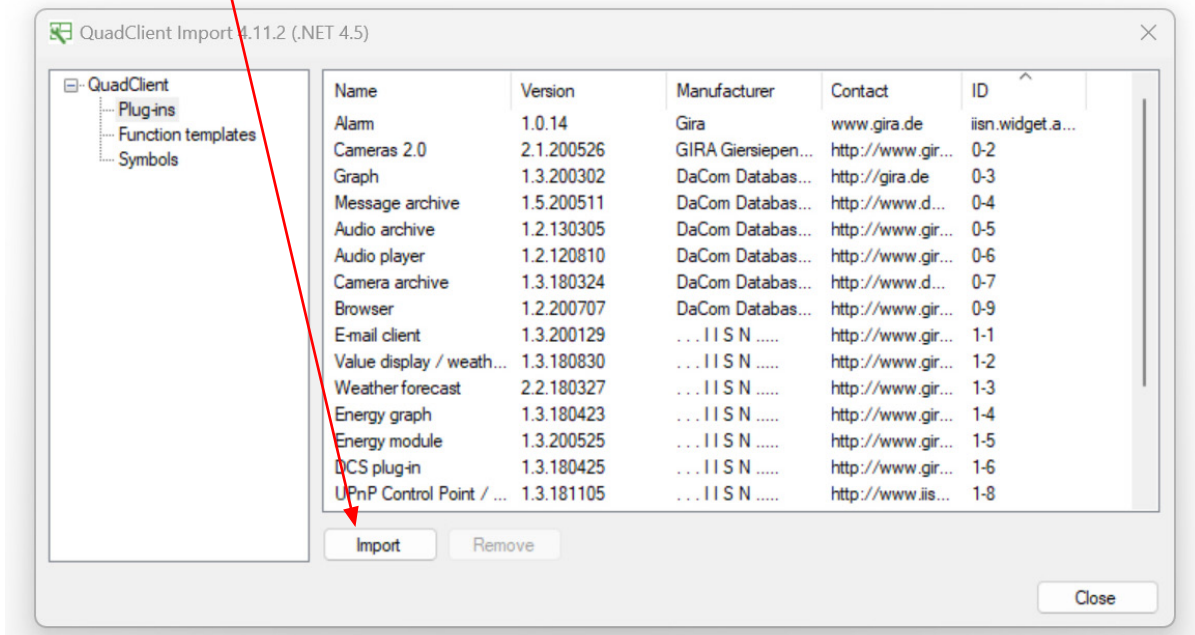


The GIRA HomeServer QuadClient Multuser 3.0 plugin has been developed for Expert 4.11 and 4.12 and can be used to operate the Revox Multuser 3.0 system in a quadrant of the QuadClient on the GIRA HomeServer. In the following steps we explain how to integrate the plugin and its integration into the QuadClient.

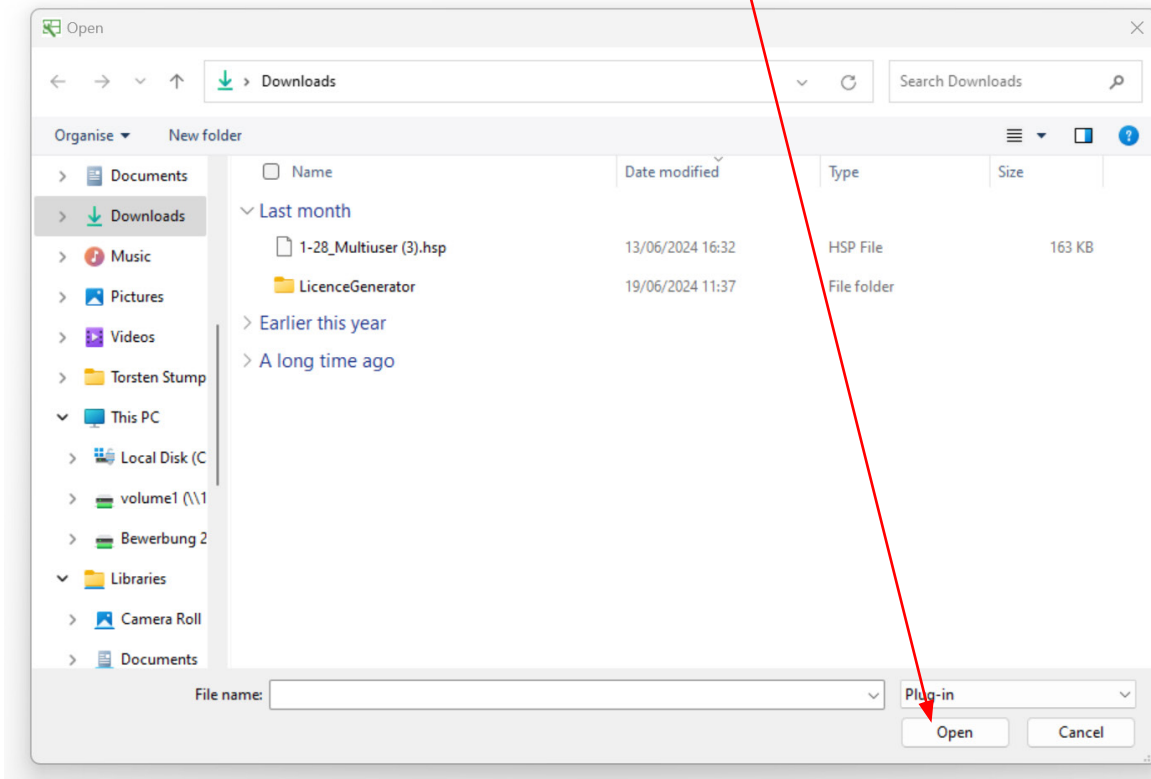
1. Open your Expert 4.11 or 4.12 and select **Import plugin** in the **QuadClient** menu item.



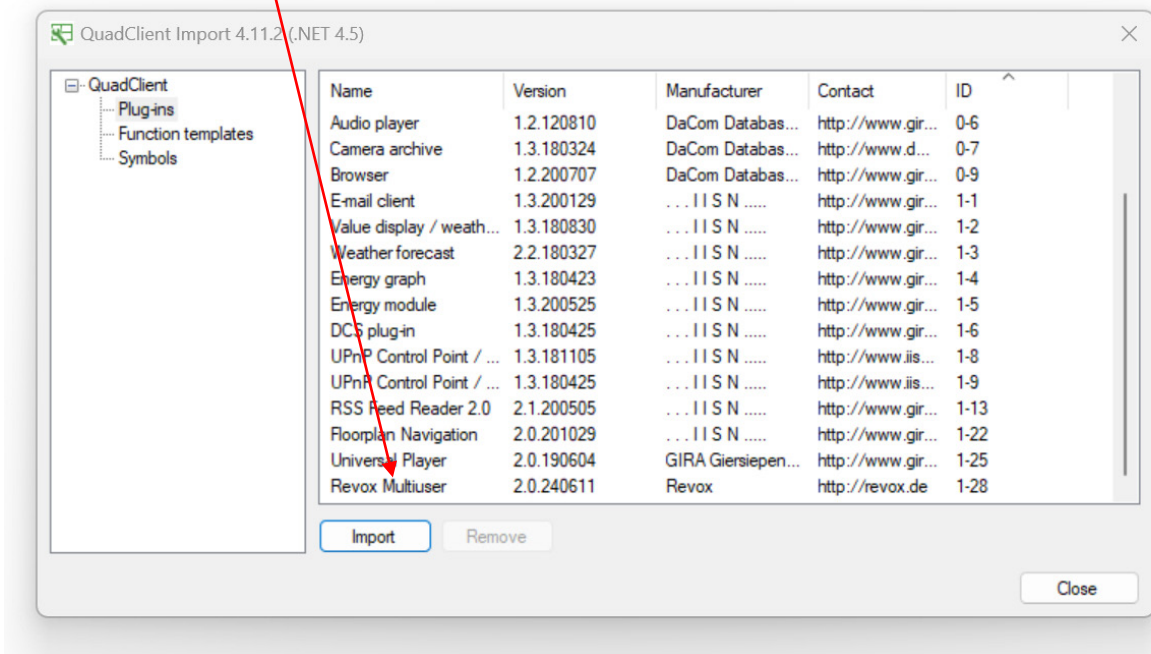
2. Click on the **Import** field.



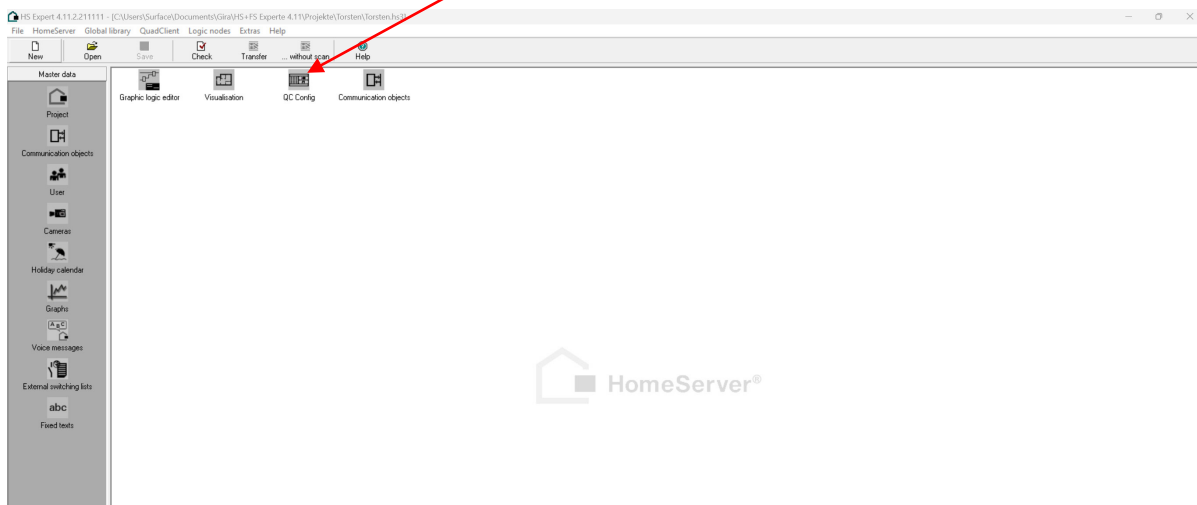
3. Select the plug-in file sent to you in the following field and **open** it.



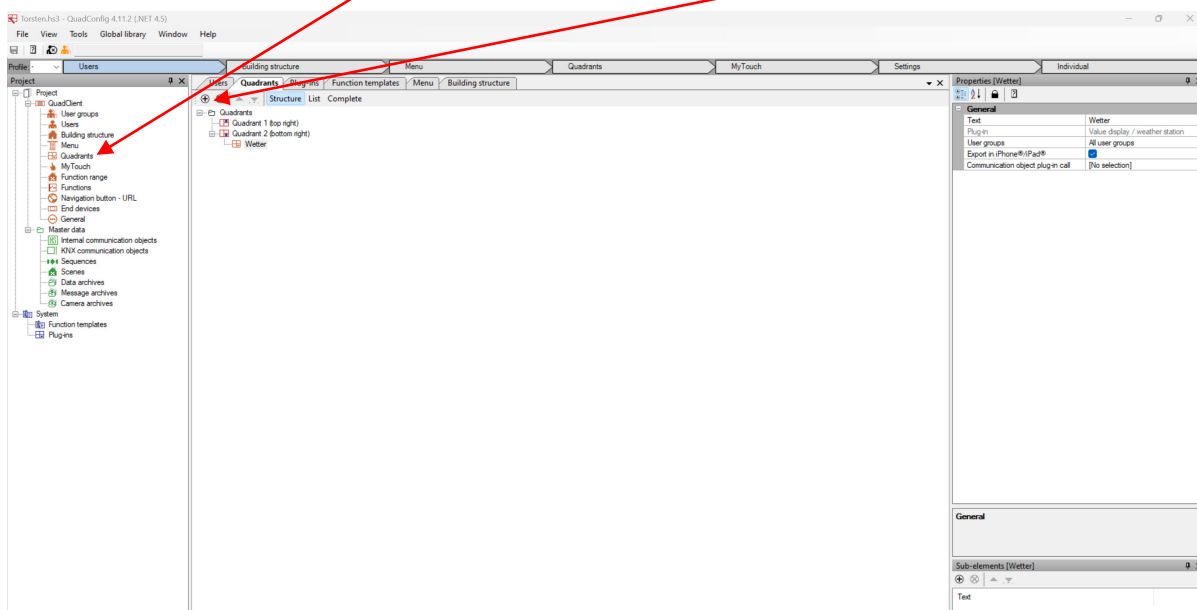
4. The Revox **Multiuser Plugin** now appears in the QuadClient Import.



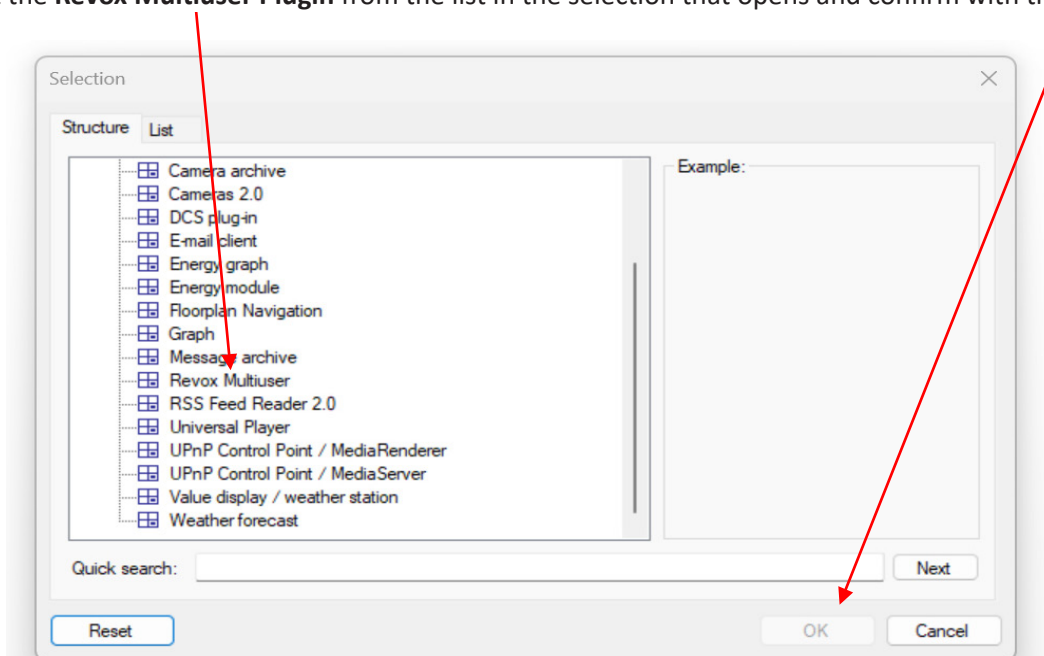
- After successful import, select the **QC Config** to add the Multiuser 3.0 plugin to the QuadClient.



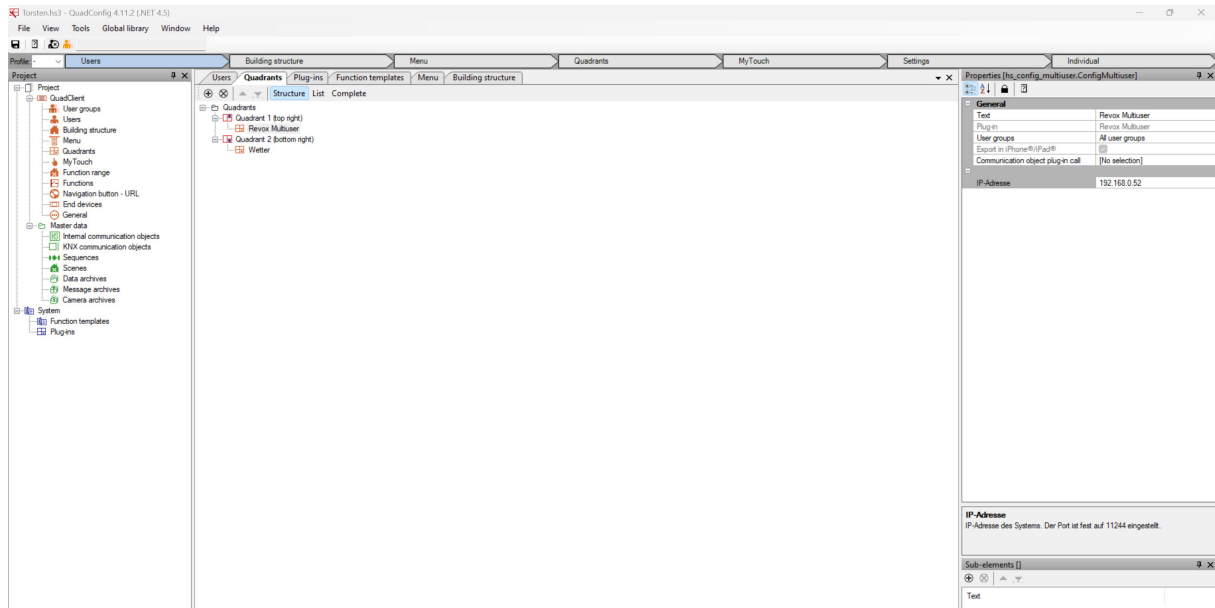
- Now select QuadClient - **Quadrants** in QuadConfig and click on the **+** symbol



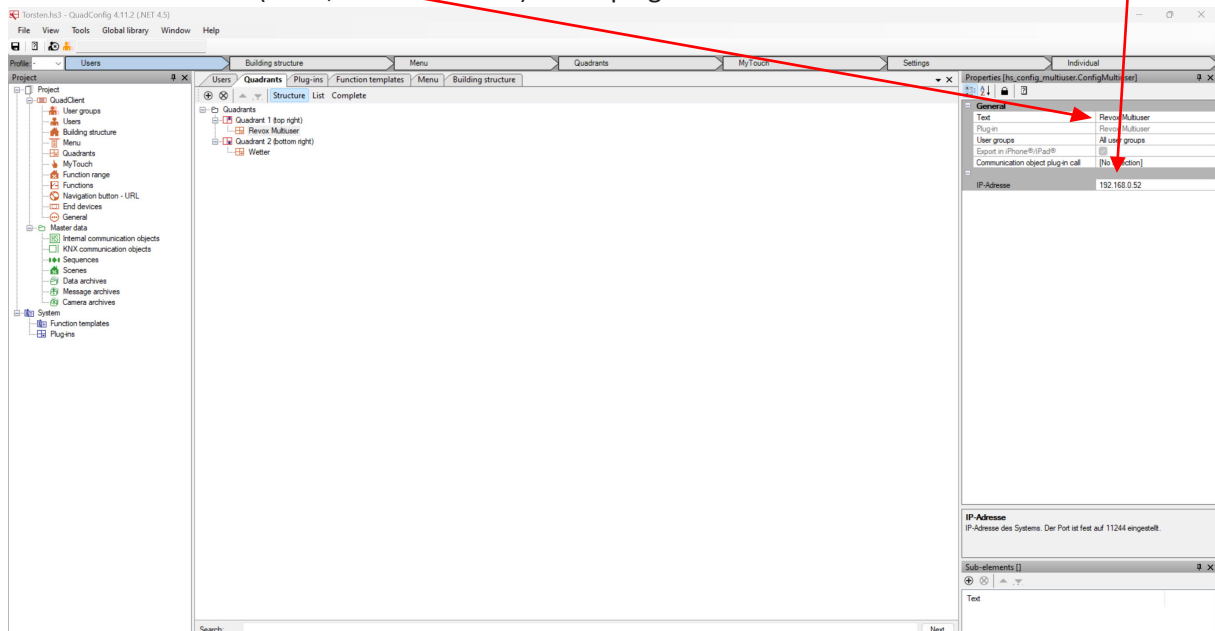
- Select the **Revox Multiuser Plugin** from the list in the selection that opens and confirm with the **OK** button.



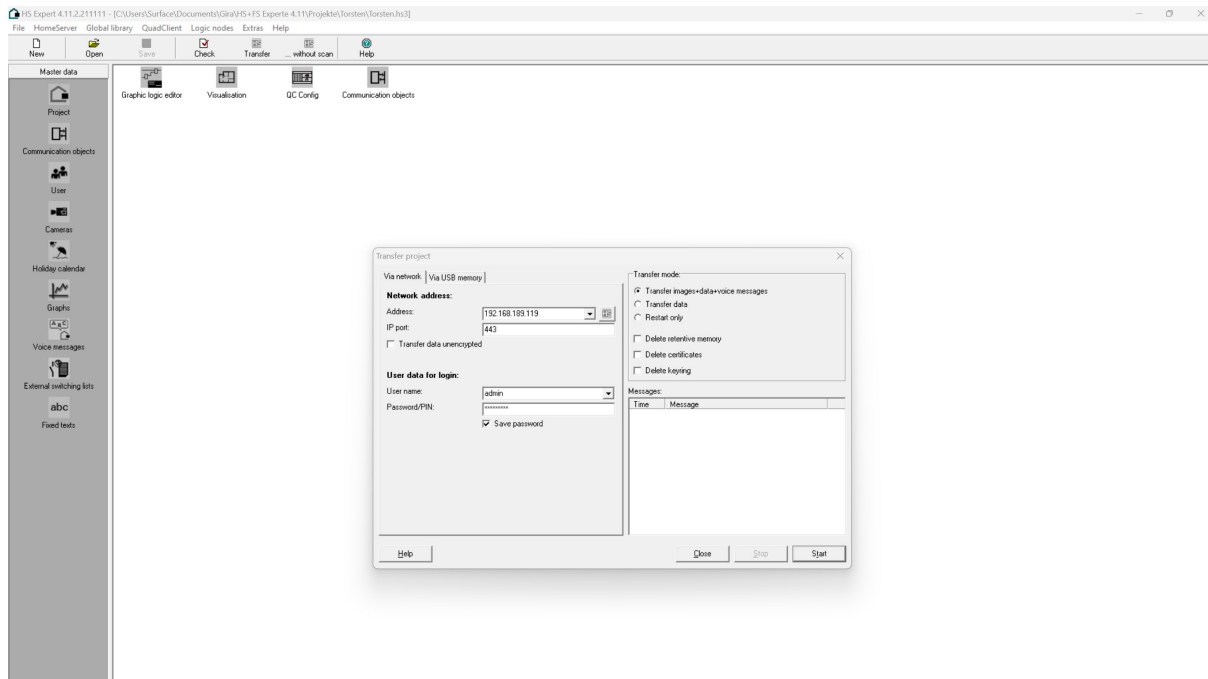
- The plugin now appears in the quadrant without a name and entered IP address.



- Give the plugin a **suitable name** (e.g. Revox Multiuser or Audio or similar) and enter the **IP address** of a Multiuser 3.0 server (V400, M300 or M500) in the plugin.

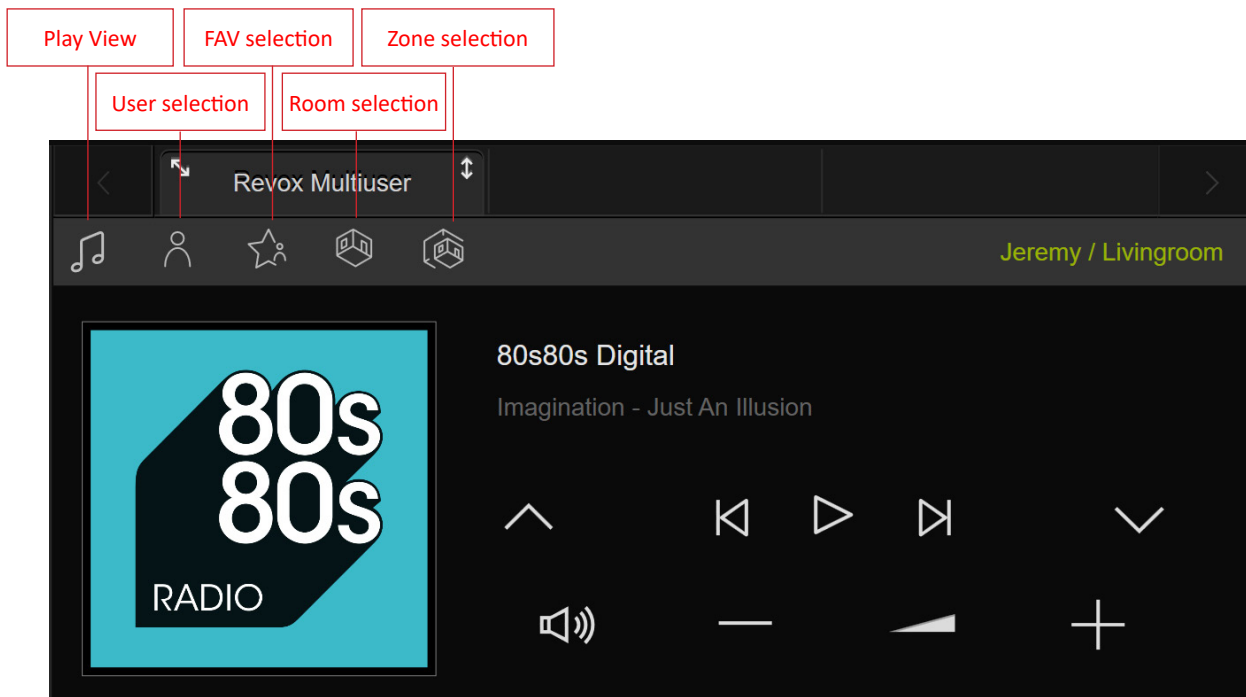


- Save your project in QuadClient Config and return to the expert. Transfer the project to your GIRA HomeServer. You will now find the Multiuser 3.0 plugin in the corresponding quadrant.

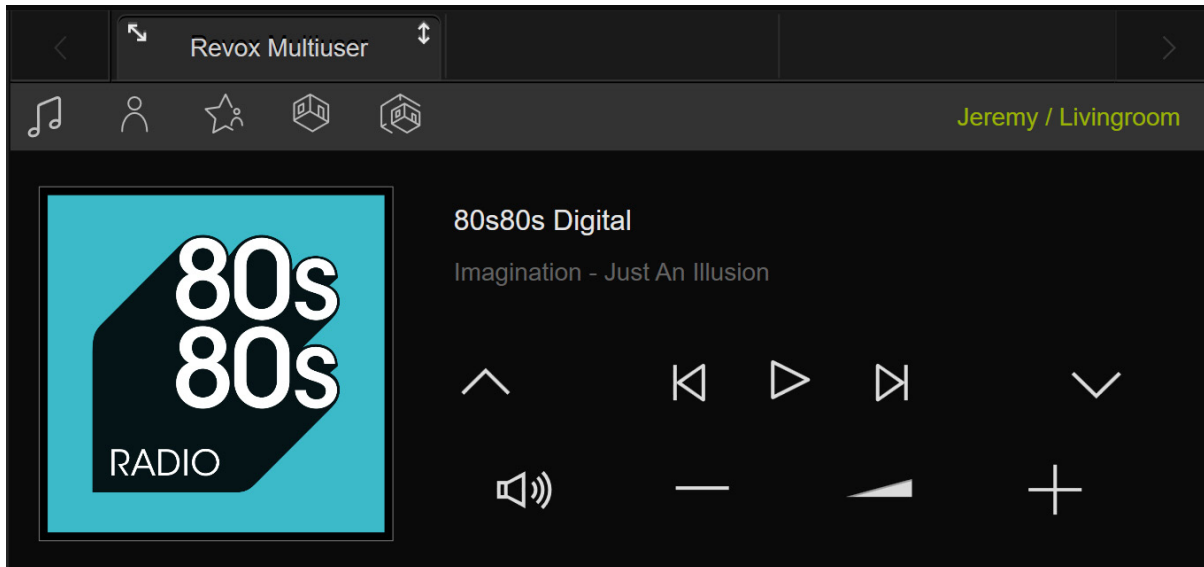


## Display QuadClient Plugin

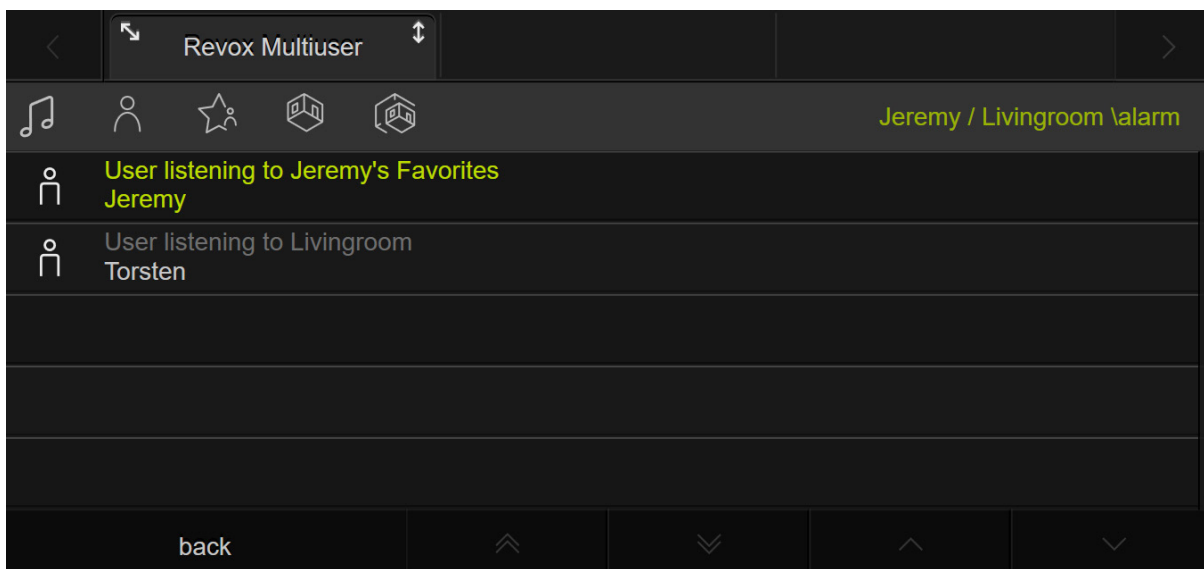
The QuadClient Multiuser 3.0 plugin is displayed in the QuadClient quadrant as follows:



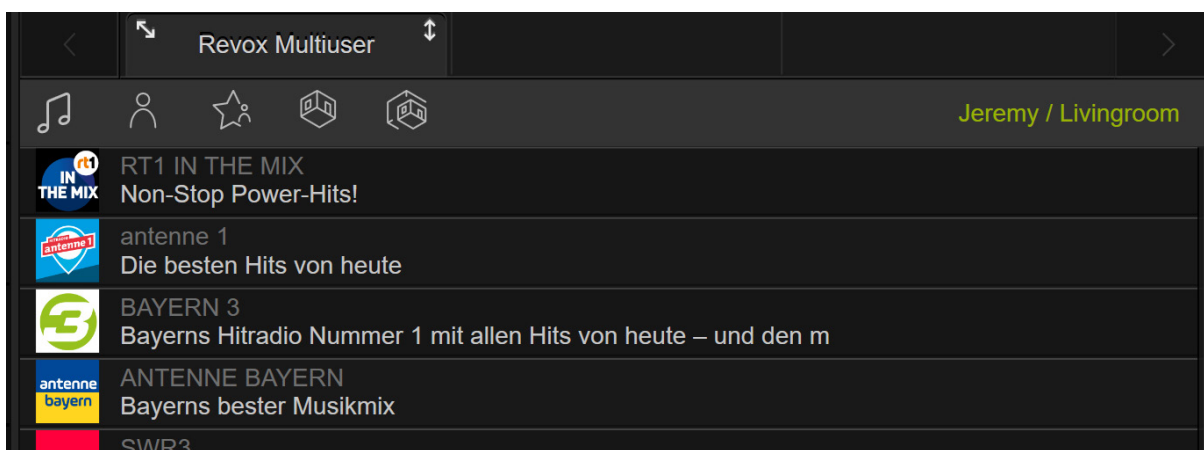
Play View shows you the information on the selected user and room/zone. The selected source and its text information are displayed. Use the up and down arrows to switch back and forth in the favorites and the left and right arrows to switch through the playlists.



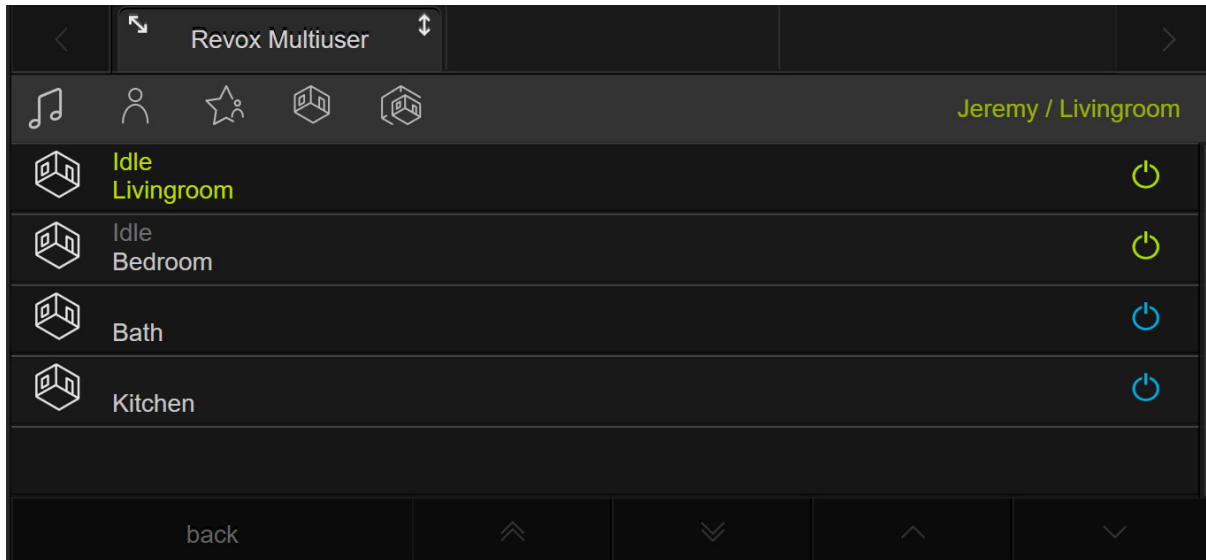
You can select your desired user in the user selection.



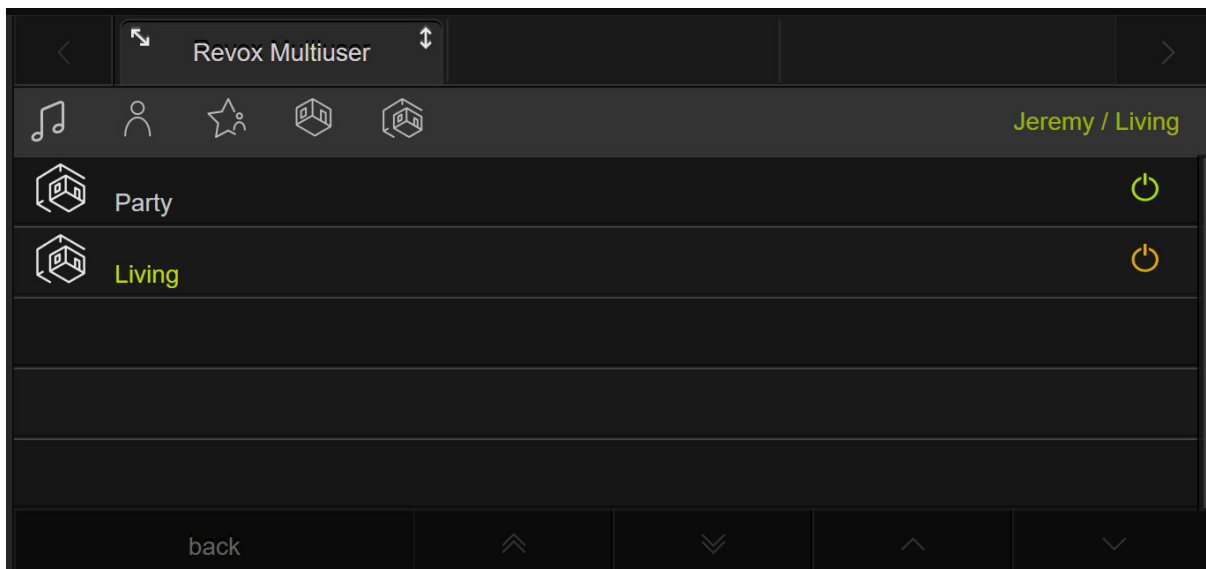
In the FAV selection, you can select your user favorites of the selected user.



In the room selection, you can select the desired room that you want to control and switch other rooms on or off. The selected room is then displayed as green text next to the active user. Green on/off symbol: room selected by the user, orange on/off symbol: the room is switched off, blue on/off symbol: the room is being used by another user.

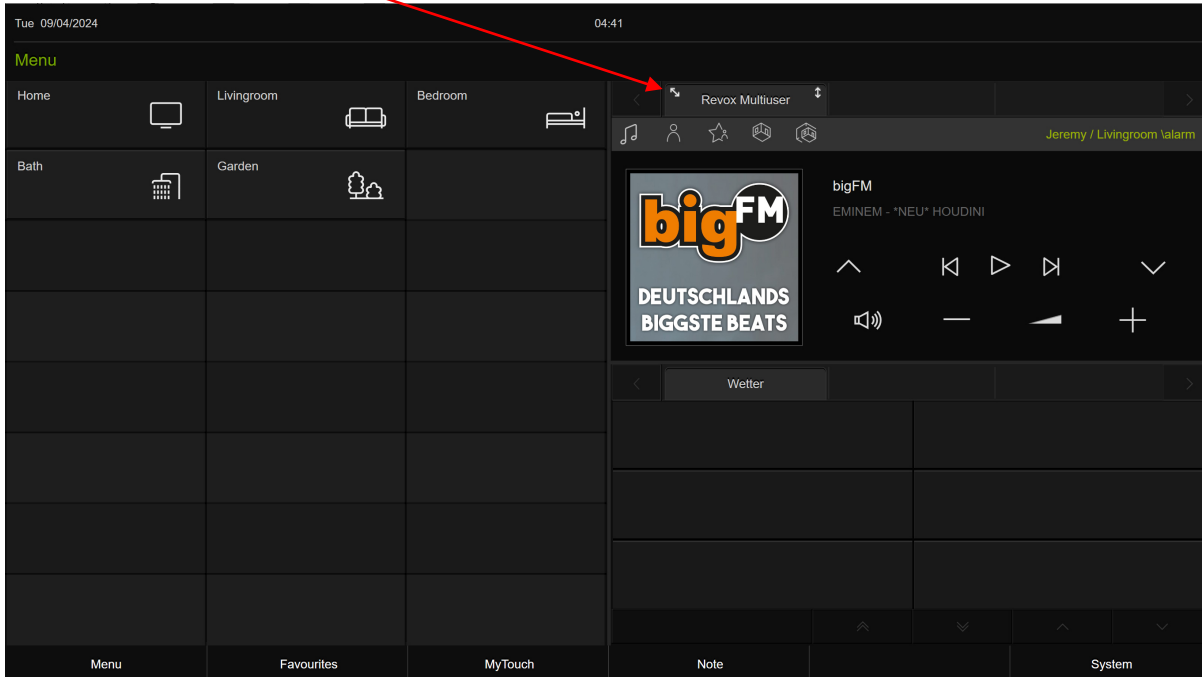


In the zone selection, you can select a zone to be operated for the selected user. Green on/off symbol: zone selected by the user, orange on/off symbol: the zone is switched off, blue on/off symbol: the zone is being used by another user.

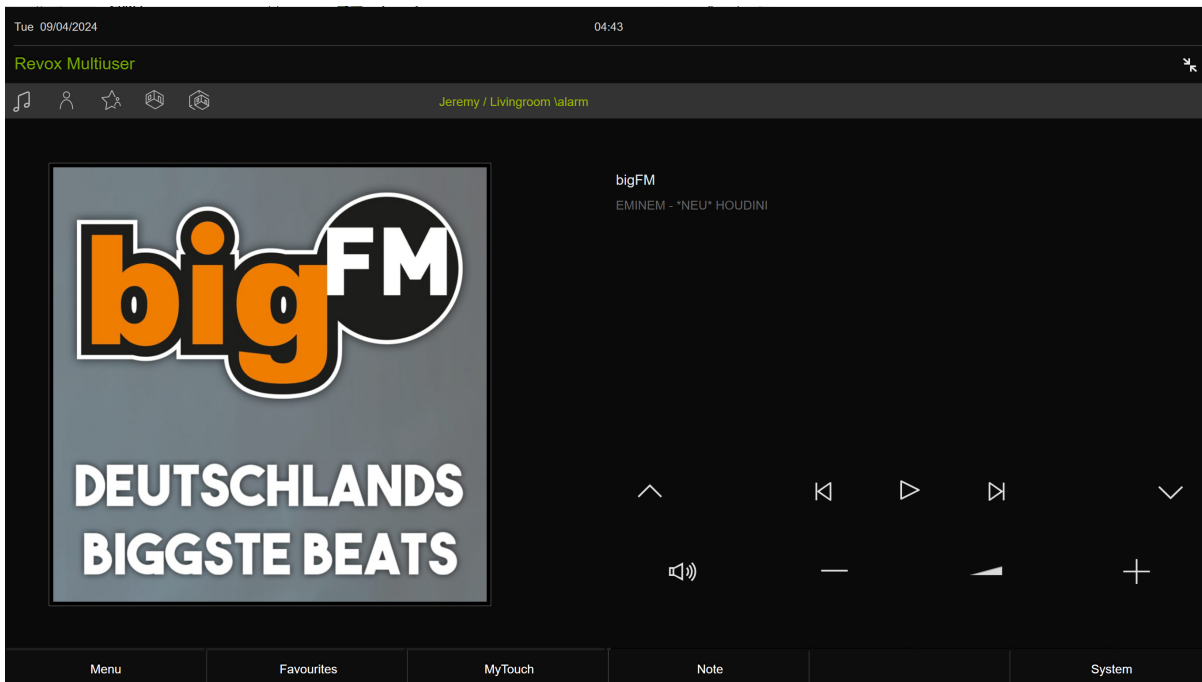


## Full view

By selecting the **slanted arrow**, you can activate the full view across all quadrants.



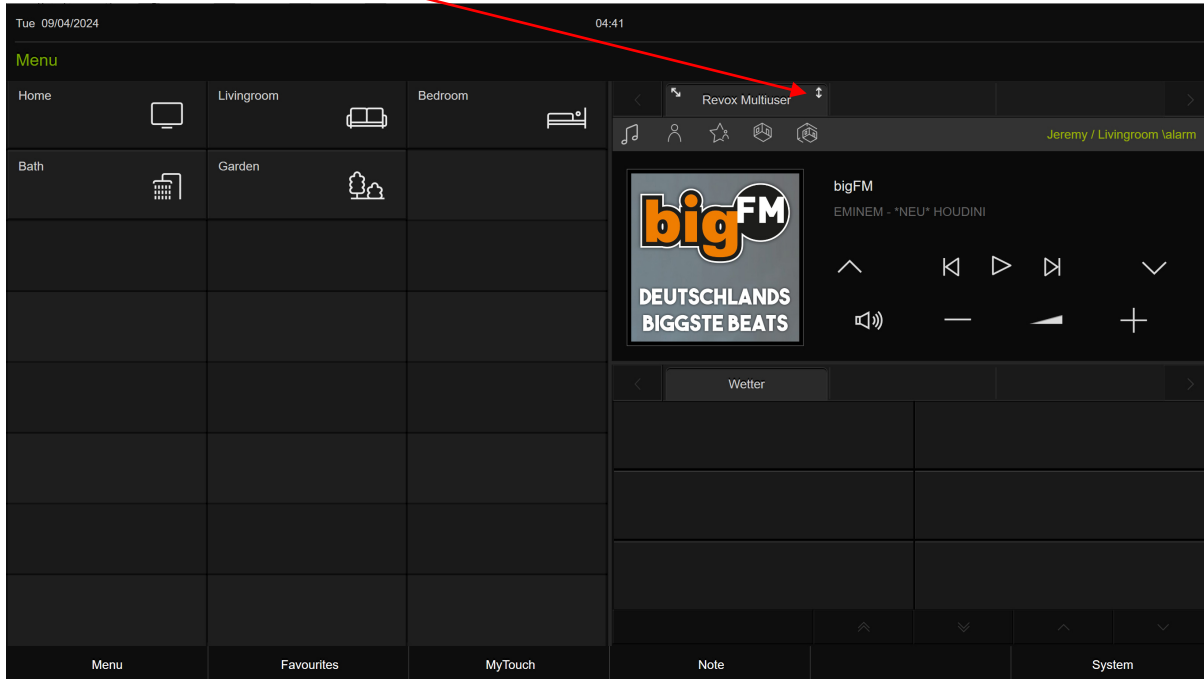
=>



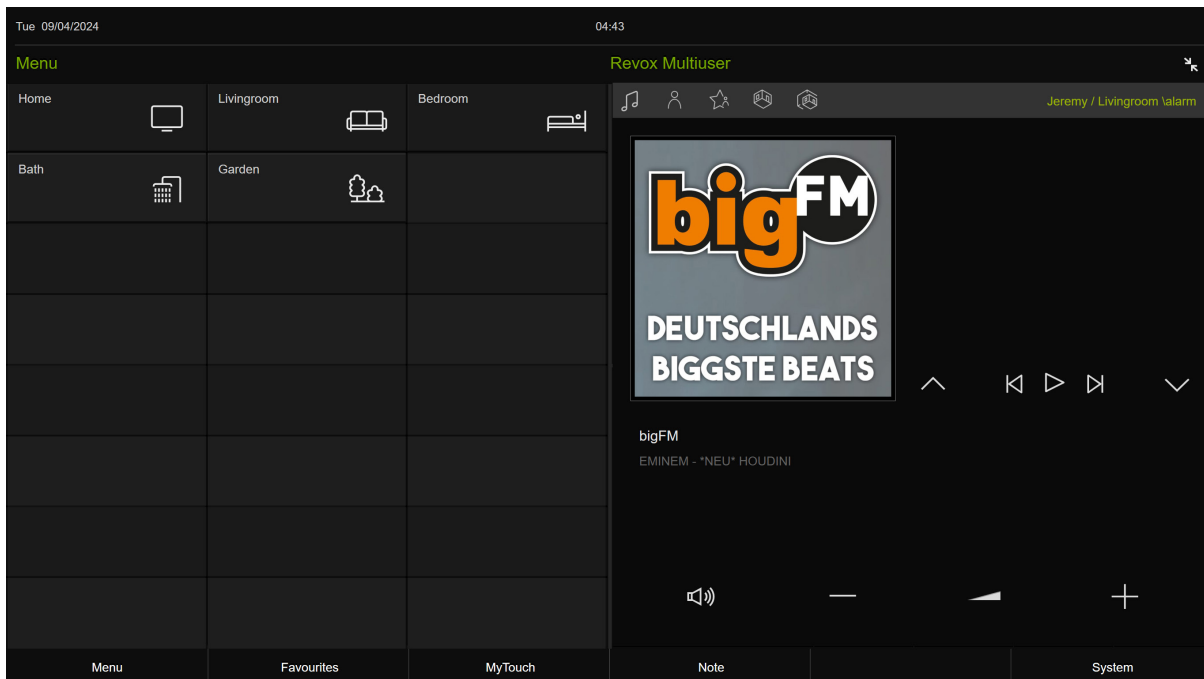


## Double quadrant view

By selecting the up/down arrow, you can activate the double quadrant view via the two right-hand quadrants.



=>



If you have any further questions about the plugin, please contact Revox Support.